



Major changes have taken place in some fair exhibit categories



BEAVER COUNTY OSU COOPERATIVE EXTENSION SERVICE

The Clover Connection for Beaver County



Both the Oklahoma State Fair and the Tulsa State Fair will offer Oklahoma 4-H'ers some new and expanded categories in which to enter projects.

The Oklahoma State Fair is slated to run Sept. 14-24. Judging will take place Sept. 13. Judging at the Tulsa State Fair will be done Sept. 27 and the fair will run from Sept. 28 through Oct. 8.

These changes are taking place in an effort to continually meet the interests of 4-H'ers, said Kevin Hackett, Northwest District 4-H youth development specialist.

"Science and technology continues to be of great interest to 4-H'ers, and not only have we expanded the categories, but we've also added new categories," Hackett said.

One of the categories is robotics. The 4-H robotics program allows club members to explore science, technology and engineering through designing and building a functioning robot. The robot can be either programmable or remote controlled and can be created by an individual or a group. In addition, 4-H'ers can create a display with photographs and an explanation of a member-developed robot that is not available for exhibit.

"Our goal with the robotics category is to have club members explore science, technology and engineering through designing and building a functioning robot," he said.

Another new fair project is the Global Positioning Systems (GPS)/Geographic Information Systems (GIS) exhibits. Participants in this category have a number of options when deciding on a specific project. 4-H'ers can put together a poster showing the parts of a GIS map; make a display that illustrates how a GPS works; create a geocache box with contents; submit a hand-drawn map along with an explanation of the purpose for the map; or create a computer-generated map. Hackett said this category also features a section for group projects.

Photography has long been a popular fair exhibit, and this year 4-H'ers can enter digital photos.

"This category is limited only to unaltered photos, however, changes that can be made include color and contrast adjustments, cropping, exposure adjustments and red eye reduction," he said. "Manipulated or digitally altered photos may be entered in the 4-H Science and Technology section as photographic illustrations. Exhibitors must include the original photo along with the altered photo and a summary of the alterations that were done."

4-H'ers who are interested in geology can enter projects in this category. This section has expanded beyond rocks and minerals to include energy and petroleum exhibits. Club members can create a display of different types of energy and how they work, or different careers in energy. This category also includes a photography exhibit, poster project or an energy or petroleum science experimental display.

Forage plants classes have changed to meet a wider variety of uses. Plant specimens must have been collected during the current project year.

Visitors to the State Fair of Oklahoma can see all of these new projects, along with more traditional 4-H projects, in the Hobby, Arts and Crafts Building. "This new location gives us lots of visibility. More people will be able to see first-hand the type of projects that are available to 4-H'ers," Hackett said.

Hackett also wanted to convey that the International Postmark Fair has been cancelled. For more information about the Oklahoma State Fair or the Tulsa State Fair, contact your local Cooperative Extension Service office.



Oklahoma 4-H /FFA Wheat Show Quality Improvement Program

Judging for the 2006 OKLAHOMA 4-H/FFA WHEAT SHOW QUALITY IMPROVEMENT PROGRAM and STATE 4-H/FFA WHEAT SHOW is scheduled at 9:00 a.m. **July 19, 2006** in the **Payne County Expo Center Heritage Hall**, at the Payne County fairgrounds located east of Stillwater on Highway 51. Shipped entries must arrive by July 18, 2006 in the Payne County Expo Center Office. See the Rules and Report Form for more details.

For a copy of the Rules and Report Form, please go to the State 4-H Website; <http://oklahoma4h/okstate.edu/events/wheat.htm> or OSU AgEcon website: <http://agecon.okstate.edu/anderson/calendar.asp> and click the link to view and print the information and documents.



Beaver County 4-Her Elected State 4-H Reporter!!

Congratulations to Melissa Barth of the Clearlake 4-H Club who was elected as 2006-2007 4-H State Reporter during State 4-H Roundup!!

2007 Washington D. C. Trip!!!

The 2007 Washington D. C. Trip has been set for August 5, 2007 to August 11, 2007. We will be seeing several different sites such as the Washington Monument, Smithsonian Museum, Arlington National Cemetery, and much more. In order to sign up for the trip you must submit a \$250 deposit by **July 28, 2006**. All deposits are not refundable. If you sign up, you will be responsible for the entire cost of the trip which is \$1,600.00, regardless of cancellations. For questions, please call the Beaver County Extension Office at 580-625-3464.

4-H Leaders' Meeting

There will be a 4-H Leaders' Meeting on Monday, July 17 from 6:00pm to 7:30pm at the Beaver County OSU Extension Office. All are welcome to attend this meeting. Please reserve your seat by calling the Beaver County OSU Extension office at 580-625-3464 by July 13. Topics that will be covered include the 4-H leaders account, the Beaver County 4-H Banquet, officer elections, fair fundraisers, and dates for county contests.



4-H Day at a Football Game

There will be a 4-H Day at a Football Game on September 2, 2006. The kick-off time is 6pm this year. There will be no supper provided. T-shirts will be provided. Costs and other details will be provided as information is available.



Selman Bat Watch Date Change

The Selman Bat Watch date has been changed from July 8 to July 29. Enrollment was limited to the first 15 participants that enrolled. Therefore, if you did not receive a participation postcard giving you details about the trip, then we hope we will have enough transportation available for you next year. Thank you so much for all of the great interest in this trip! For more information please call the Beaver County Extension Office at 580-625-3464.



Recordbooks and Pointsheets

Please have your recordbooks and pointsheets turned into the Beaver County OSU Extension office by July 11, 2006. For more information please contact the Beaver County OSU Extension Office at 580-625-3464.

State 4-H Horse Show

There were 213 youth, 240 horses and 810 entries at the State 4-H Horse show. Events like the State 4-H Horse Show take the time, talent and resources of many people, most who volunteer their all just because they believe in what the show represents.

Show sponsors: Over \$3000 was donated, mostly by 4-H clubs and individuals with 4-H horse project connections.

Volunteers: Much of the gate management and arena crew responsibilities fell upon the backs of parents serving as volunteer leaders (in their down time from overseeing their children).

Thank you so much for your support.

David W. Freeman
OSU Coop. Ext. Equine Spec.
OSU Dept. ANSC Ext. Coordinator
Oklahoma State University
Stillwater, OK

Results for the District and State Horse Shows will be posted in our August newsletter.



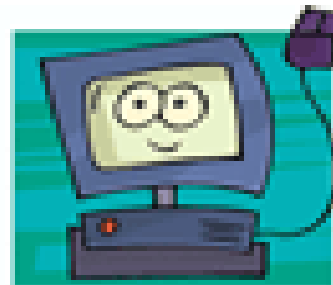
**U
p
c
o
m
i
n
g

E
v
e
n
t
s**

4-H Calendar

- July 6 - Fish Study and Illegal Dumping Poster
7 - Fish Clinic
11 - 4-H Flyer Workshop
12 - Robotics Workshop
13 - Weather and Fertilizer GIS Workshop
14 - 4-H Flyer Workshop
17 - Floral Design Makeup Workshop
18 - Birdhouse Workshop
19 - Ceramics and Crocheted Flip-Flops Make- Up Workshop
21 - Powerpoint Presentation Workshop
22 - Leadership Development Conference and Youth Science Camp– Stillwater
25 - Creative Writing Books
26 - Craft School #2
27 - Purse Weaving Workshop
28 - Leather Craft Workshop
29 - Bat Watch

- Aug 2 - Food Preservative Workshop
3 - Pickles Workshop
3 - 4-H School Enrichment Workshop, Beaver Schools
4-5 - State 4-H Ambassador Retreat, Bockelman's Ranch
25-27 - ODWC Expo, Lazy E Arena
- Sept 2 - 4-H Football Game Day
6 - 9 - Beaver County Fair
14 - 24 - Oklahoma State Fair



This newsletter is published monthly by the Beaver County OSU Extension Office, PO Box 339, Courthouse, Beaver, OK 73932 (580) 625-3464, and is one way of communicating educational information. Reference to commercial products or trade names is made with the understanding that no discrimination is intended and no endorsement is implied.



Beth Crumpler
Extension Educator, 4-H Youth Development



Beaver County Cooperative Extension Service
Oklahoma State University
111 W 2nd ST
PO Box 339
Beaver OK 73932