



4-H Clover Connection

February 2007

TEXAS COUNTY

4-H Program Has Many Opportunities Beyond State's Borders

It is no secret that the Oklahoma 4-H program offers many fun and exciting events right here in the state. State 4-H Roundup in Stillwater is the biggest event that takes place each year.

There are also events such as the Omniplex Camp-In, district leadership conferences and county camps. However, for club members who are dedicated and stick with the program, there are many things to do outside of Oklahoma.

"There are many excellent opportunities for 4-H'ers to participate in out-of-state activities and conferences," said Tracy Branch, Oklahoma State University Cooperative Extension Service 4-H events coordinator. "4-H offers trips to Washington, D.C., Kansas City, Denver and Atlanta. Oklahoma 4-H'ers have the opportunity to see a lot of different places around the country through their involvement in the 4-H program, especially if they stay involved through high school."

Counties have different ways of selecting delegates to take part in the out-of-state trips, but they also get to learn more about the area through exciting tours and other events," she said.

Delegates who are chosen for Citizenship Washington Focus have the opportunity to travel to the nation's capital each summer. CWF is a week-long citizenship program conducted by the National 4-H Council for youth ages 15 to 19.

Branch said this trip is a chance for young people to broaden their appreciation and practice respect for themselves and others, increase individual commitment to citizen involvement and understand the importance of civic and social responsibilities.

The Kansas City Global Conference takes place in the spring and is designed to help youth prepare for the future by providing them with learning opportunities, hands-on activities and cultural events. The workshops deal with different career opportunities.

"High school students may have an idea of what they want to major in when they go to college, but the Kansas City trip could open new doors to careers they hadn't even considered," Branch said. "This conference is a great opportunity to learn about different cultures from around the world. They also take part in service learning projects."

National 4-H Congress takes place immediately following Thanksgiving in Atlanta and is designed to address the needs and issues of youth while helping to develop capable, competent and caring citizens.

Delegates for National 4-H Congress are selected through an interview process during State 4-H Roundup in May.

Denver National Western Roundup is a combination of a youth leadership conference and national contests. This event takes place in January.

"This trip is such a fun trip for everyone who participates," Branch said. "Not only do they learn new things, but they also get to tour different places in Colorado and go skiing."

Most of the out-of-state trips are designed for club members who are at least 15 years old, so that is why it is important to stay involved in the program.

"There aren't many clubs that offer the travel and cultural opportunities that the 4-H program offers," Branch said. "If you get involved and stick with it, you'll have the chance to see a lot of our country."

Scholarship Opportunity

The Delphinium Garden Club offers a scholarship for students (high school senior) studying Horticulture, Floriculture, Landscape Design, Botany, Plant Pathology, Forestry, Agronomy, Environmental Concerns, City Planning, Land Management, Landscape Architecture or other related studies. The amount is \$500.00 to a major university and \$250.00 to a technical school in Oklahoma.

Applications are available in the OSU Extension office and deadline for application is March 31, 2007.

Lamb Lead

The Lamb Lead Contest will be on February 22nd at the Texas County Activity Center. Interviews will be at 4:00 p.m in the Banquet Room. The lead will begin at 6:00 p.m in the arena at the fairgrounds.

Ronald McDonald Campaign

Hopefully, you have been asking for donations for the Oklahoma Ronald McDonald House Campaign. Monies and coupons not given out must be returned to the OSU Extension Service, not later than February 22nd. You may also give them to Arleen at the stock show.

Officer's Training

On February 28th, Arleen will lead an officer's training. Since the session in January was cancelled, we'll cover the duties of the President/Vice-President in this training. We'll begin at 5:30 p.m. in the conference room and be done by 7:30 p.m. at the latest. All local/county Presidents and Vice-Presidents are urged to attend. We encourage club leaders to attend as well. Please RSVP by February 23rd!

Congratulations



CLOVERS to Cody Fischer winner of the Illustrated Presentations Contest in the junior division.

KUDOS to Sidney Fischer---2nd

Sage Fischer-----3rd

Austin Glover---4th

Talks Contest

Now is the time to begin preparations for the March 26th "Talks Contest." Every 4-H member should plan to give a talk. Help will be provided by Arleen James. She will be attending your local club meetings to visit with you about your talk. Have your talk started, or at a minimum know which topic you will talk on. E-mail your topic title to Arleen and she'll provide resource information to help you. E-mail address is: arleen.james@okstate.edu

Juniors: 3 to 5 minutes in length

Seniors: 5 to 7 minutes in length

No visuals will be permitted.

State 4-H Parent & Volunteer Conference

Date: July 14, 2007

Place: Oklahoma State University

Enroll by May 1st. Download application at

<http://oklahoma4h.okstate.edu/volun/eduopp.htm>

This is a great opportunity to learn, grow and meet others who enjoy 4-H. Make plans to attend!

Job Readiness

Individuals that would like to participate in the Texas County Job Readiness Program will want to mark your calendar for April 16, 2007. It will start at 6:30 p.m. in the OSU Extension Service conference room. This contest is designed to sharpen your skills in the job application and interview process. If you are interested, call or stop by the Extension Service to get your packet of information to complete prior to the contest. Pre-entry deadline is Friday, April 13th. Open to intermediate (14-15 years) and Senior (16-18 years) individu-

Rescheduled Training Opportunity

March 31, 2007

8:00-10:00 am--**4-H Orientation**--do you know everything that you need to know about the 4-H program? If not, come find out a lot of facts and information. Presented by Steve Kraich.

10:00-12:00 pm- **-County Events**--What's a talk, a dress revue, a lamb lead? Come find out what all 4-H has to offer in the way of county events. Presented by Arleen James.

12:00-1:00 pm- **-Free lunch and sharing of 4-H club activities**

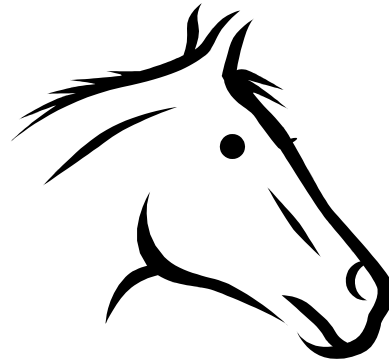
1:00-3:00 pm- **-Want to lead a project club under the goats project**, but don't know how to, then this session is for you. You'll learn a lot about goats as Steve Kraich presents this session.

3:00-5:00 pm- **-How to lead a project group in Foods & Nutrition (F & N)**. If you are enrolled in Foods or just wonder how the F & N project works, then Arleen James will show you the ropes in this session.

All 4-H members, parents, current leaders, Cloverbud leaders and anyone else are invited to attend 1, 2 or all 4 of the sessions. These trainings will count toward the hours needed for certification for leaders. You will be able to get all four required done in one day by attending all four. We plan to videotape the presentations as well, so if you can't attend on the 20th, you can come by the office to review the tape or check it out! Please let us know you'll be coming, so we can have materials ready and enough food for all.

Horse Essay Contest for 4-H Members

The purpose of the contest is to encourage the growth and development of the 4-H Oklahoma Horse Program in the Oklahoma Panhandle. One



2006 AQHA bay gelding will be awarded to the winner of the essay contest. This gelding has been donated by Phillip and Deni Bruton of Kuel Quarter Horses in Turpin, OK.

Essay requirements are:

Title of Essay: "Why I Want To Win A Horse"

Length of Essay: Not to exceed 400 words.

The essay must be typed.

Any 4-H member in Woodward, Harper, Ellis, Beaver, Texas or Cimarron County may enter. Youth must have not completed their junior year in High School by due date of award program. Contest deadline is March 10, 2007. Rules, agreement form, and questionnaire can be picked up at the extension office or call 338-7300 for more information.

Senior 4-H Camp

Northwest District 4-H'ers that have completed the 7th grade or older are invited to join the senior campers from Logan, Kingfisher, Blaine and Garfield Counties for the 1st Annual NW District Sr. Camp. Activities will include: Leadership Training, Swimming, Dancing, Games, and much more. The dates for the camp are June 11-13, 2007 at the Roman Nose State Park. Cost of the camp is \$50.00. Call to reserve your spot at the Kingfisher County OSU Extension Center at (405) 375-3822.



OKLAHOMA FARM BUREAU

2501 N. STILES • OKLAHOMA CITY, OK 73105-3126 • 405-523-2300

The Oklahoma Farm Bureau is sponsoring the annual Young Farmers and Ranchers Speech Contest to be held in conjunction with the 2007 Oklahoma Youth Expo. The contest will take place Monday, March 12, 3:00 p.m. at OSU/OKC. All entries must be postmarked by March 1, 2007. Registration will begin at 2:00 p.m. on the 3rd floor of the Student Center.

Age Divisions -

Juniors- 9-12 years old

Intermediate- 13-15 years old

Senior- 16-18 years old

Division Categories -

Agricultural Production

Environment & Natural Resources

Agriculture Policy

Speeches for the junior division should be between 3 and 5 minutes in length, Intermediate and Senior speeches should be between 5 and 8 minutes. Those giving speeches that are shorter or longer will be penalized for each section over or under the time limit. Contestant number will identify contestants. Each contestant must have written his or her own speech. Each contestant must have done the research behind their speech and have written the first draft. It is permissible for them to have had an adult correct the grammar or give suggestions but the student must have done the majority of the work. Quotations from other speeches or from written material may be used but they must be attributed to their original author. Failure to write their own speech is grounds for disqualification. Please bring three hard copies of the speech for the judges. These copies will be returned to the student.

No visual aids will be allowed. This includes everything from holding up an apple to using detailed charts. Use of any visual aid will be grounds for disqualification.

Each contestant will be asked several questions following their speech. These questions should include anything about their topic that did not directly cover in their speech.

Points will be awarded based on the following:

Presentation: 25%

Content: 25%

Responses to Questions: 25%

Poise and Appearance: 25%

Awards will be distributed as follows:

Junior division awards (will be awarded to each of the three categories)

1st- \$400 savings bond

2nd- \$200 savings bond

3rd- \$100 savings bond

Intermediate division awards (will be awarded to each of the three categories)

1st- \$500 savings bond

2nd- \$200 savings bond

3rd- \$100 savings bond

Senior division awards (will be awarded to each of the three categories)

1st- \$1,000 scholarship

2nd- \$500 scholarship

3rd- \$200 scholarship

Teen Leader Training. . .Parliamentary Procedure in a Nutshell

ORDER OF BUSINESS

- 1) Call to Order
- 2) Secretary reads minutes
- 3) Report of committees
- 4) Unfinished Business
- 5) New Business
- 6) Announcements
- 7) Adjourn Meetings

MAIN MOTIONS

- a. Member is recognized by Chair
- b. Member makes or proposes a motion "I move that."
- c. Another member seconds the motion
- d. Chair states the motion to the assembly
- e. The Chair calls for discussion of the motion
- f. Members discuss the motion pro and con, may move to amend
- g. The Chair takes a vote on the original motion or the motion as amended
- h. The Chair announces the result

AMENDMENTS

- a. A member moves to amend the motion
- b. Another member seconds the motion to amend
- c. The Chair states the amendments to the motion
- d. The Chair calls for discussion of the amendment
- e. Members discuss the amendment to the motion
- f. The Chair states the amendment and the result of the vote
- g. Return to main motion

RESPONSIBILITIES OF THE CHAIR

- a. Check on arrangements for each meeting and confer with program Chair and local leader regarding program and business.
- b. Preside at all meetings. Call and adjourn the meeting on time.
- c. Keep the meeting on schedule. The Chair should not dominate the meeting.
- d. Appoint committees when authorized to do so by the constitution or by the club.
- e. Maintain interest among membership. Set a good example of sportsmanship, leadership, citizenship, and cooperation.
- f. Counsel with local volunteer and Extension Educator (s).

RESPONSIBILITIES OF THE SECRETARY

- a. Call roll at each meeting unless other wise instructed.
- b. Record attendance at each meeting.
- c. Keep an up-to-date list of membership information in the secretary's book
- d. Keep a complete list of members and their projects. Check member's participation in events.
- e. Keep all parts of secretary's book up-to-date. Turn in to the County Extension office when requested. The extension educators use the information for annual reports.
- f. Keep complete and accurate minutes for each meeting.
- g. Record only motion and final decision.

RULES FOR HANDLING A MOTION

1. Order of Precedence of Motions
Precedence means, the order in which motions may be proposed, considered, and disposed of. The order in which the most frequently used motions may be proposed is given in the following table:

- a) Privileged Motions
 - 1) - Adjourn
 - 2) - Recess
 - 3) - Question of Privilege
- b) Subsidiary Motions
 - 1) Postpone Temporarily (Lay on the Table)
 - 2) Vote Immediately (Previous Question)
 - 3) Limit Debate
 - 4) Postpone Definitely
 - 5) Refer to a Committee
 - 6) Amend
 - 7) Postpone Indefinitely
- c) Main Motions
 - 1) Main Motions and Specific Main Motions
- d) Incidental Motions

The basic rule is that when a motion is pending, any motion of higher precedence may be proposed but no motion of lower precedence may be. For example, if a main motion is pending, a subsidiary or privileged may be made.

Incidental motions have no order of precedence among themselves. As a group they rank between privileged and subsidiary motions. Since they arise incidentally and are disposed of as raised, they present no precedence problems.

Dress Revue/Impressive Dress Contest

Date: April 14, 2007

Place: Hardesty School Auditorium

Time: 1:30 p.m.

Dress Revue Entries: (Items to be modeled)

9-11 year olds:

Chef Apron (pattern from office)

Tote Bag (pattern from office)

Skirt w/elastic waist

Shorts w/elastic waist

Simple two-piece active sportswear
(shorts and pull-over top is an example)

Decorated ready-made (purchased) shirt

Items to be judged and displayed:

9-11 year olds:

Pillowcase (pattern from office)

Laundry Tote (pattern from office)

Simple Curtains

Simple Garment Bag (pattern from office)

12-14 year olds: (items to be modeled)

Bath robe

Pull on Top w/coordinating bottom

Shorts, Pants, Skirt w/waistband

One-piece Dress or Jumper or Jumpsuit

Two-piece Garment

Decorated Garment

Items to be judged and displayed:

Blanket w/binding

Duffel Bag

Recycled Garment

Decorated Garment w/decorative stitches, braid, etc.

15 years & up: (items to be modeled)

Special Activity Garment

Two-piece Ensemble

Lined Skirt

Unlined Raincoat, Poncho, Slicker

Unlined Garment

Coat lined or unlined

Special Occasion Garment

Garment from Specialty Fabric

Garment from another textile product

Items to be judged and displayed:

One-piece of Specialty Luggage

Back-Pack, Day-Pack or Fanny-Pack

Two-pieces of travel accessories

Again this year you may also bring the following to be judged: (Each level can sew, knit or crochet)

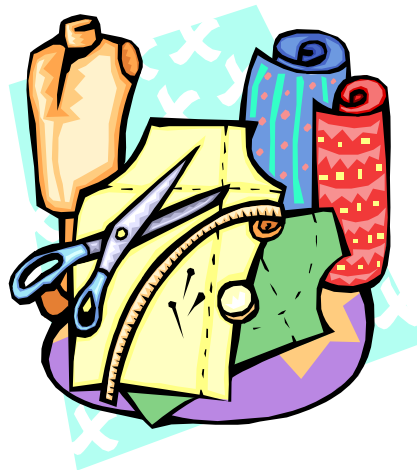
(Must be your own work!)



- Decorative Pillow
- Novelty Pillow
- Purse from Fabric
- Purse from other materials (i.e.) kool-aid packages, flower seed packets
- Items made from fleece material
- Knitted item
- Crocheted item
- Pot holders (2)
- Placemats (2)
- Stitching
- Stitched Stuffed Animal or Doll
- Wall hanging , incorporating hand or machine hanging storage unit from fabric

All sewn items need to be in Arleen's possession NLT 5:00 p.m. on April 12, 2007. Entry form must be completed in 4-H members own handwriting (will be in March newsletter). Be sure and answer the questions on the back of the entry form for Fashion/Dress Revue.

Check your county handbook for more info!



Concession Stand

Each club is responsible for having **two adults** (one to help cook & one to operate the cash register) and a **minimum of four 4-H members** to work at the concession stand during the stock show.

Concession Stand Schedule

<u>Tuesday, February 20</u>	<u>Wednesday, February 21</u>	<u>Thursday, February 22</u>
8a m - 2p m ~ Hardesty 4-H 2p m - Closing ~ Guymon 4-H	8a m - 2p m ~ Texhoma 4-H 2p m - Closing ~ Goodwell 4-H	8a m - 4:30 p m ~ Hooker 4-H 4:30 p m - Closing ~ Yarbrough 4-H (to include serving of buyer's dinner and clean-up)

We always need help in washing dishes and cleaning of the concession stand after the buyer's dinner---all clubs should have individuals who can help with this. This is usually done during the auction, so if you have 4-H members or parents whose 4-H members aren't in the sale, we could use their help!

Support the 4-H concession stand!!! This is one way we earn funds to support the 4-H members trips and awards. We thank you for supporting the program when you work, provide food and help clean up.

Develop Your Leadership Skills

Leadership Skills are developed by:

Observing Others

Listening to Others

Learning about Yourself and Others

Practicing Leadership Behavior

Leadership behavior is practices by:

√ Learn to listen and follow directions. People who cannot follow directions have trouble leading.

√ Concentrate on developing and performing leadership actions in specific situations.

√ Later these actions will become more comfortable and a natural part of your behaviors. This makes these leadership skills - life skills because, you will naturally draw upon and use them throughout your life.

√ Start out developing skills for working with individuals. Master your personal and interpersonal skills.

√ Personal skills are the behaviors you exhibit when dealing with another individual. The skills could include gestures, facial expression, tone of voice, actions, and oral communications.

√ All interpersonal skill is the application of personal skills in establishing and maintaining a positive relationship between individuals.

√ With these skills mastered, expand to working with and finally giving guidance to groups of people.



Arleen James, Texas County
OSU Extension Educator
FCS/4-H & CED

Steve Kraich, Texas County
OSU Extension Educator
Ag/4-H

This newsletter is one way of communicating educational information to the residents of Texas County and others. For free subscription, contact The Texas County OSU Extension Center, P.O. Box 320, 301 N. Main St., Guymon, OK 73942, or phone us at 580-338-7300. Our email is ocestxco@ptsi.net and visit our web site at countyext.okstate.edu/texas. The information given herein is for educational purposes only, references to commercial products or trade names are made with the understanding that no discrimination is intended and no endorsements by the Oklahoma Cooperative Extension Service is implied. Oklahoma State University, in compliance with Title VI and VII of the Civil Rights Act of 1964, Executive Order 11246 as amended, Title IX of the Education Amendments of 1972, Americans with Disabilities Act of 1990, and other federal laws and regulations does not discriminate on the basis of race, color, national origin, sex, age, religion, disability, or status as a veteran in any of its policies, practices, or procedures. This includes but is not limited to admissions, employment, financial aid, and educational services.

Texas County Cooperative Extension Service
Oklahoma State University
P O Box 320
Guymon, OK 73942